

VALVOLA ECCESSO DI FLUSSO GPL

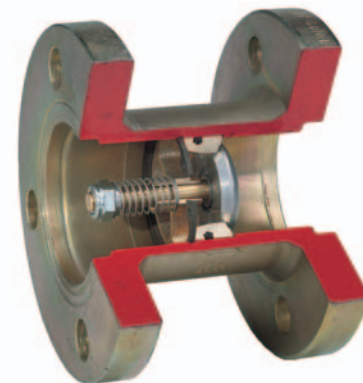
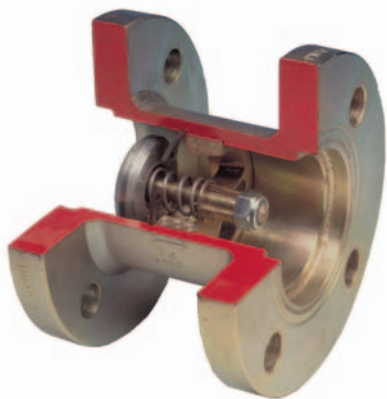
EXCESS FLOW VALVE

SOUPAPE D'EXCES DE FLUX

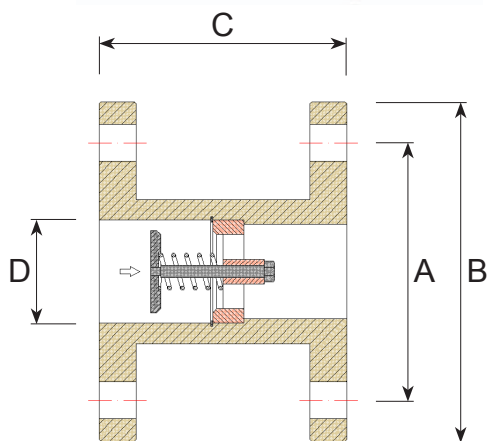
VALVOLA DI NON RITORNO GPL

CHECK VALVE

SOUAPE DE NON RETOUR



COPRIM - ITALY

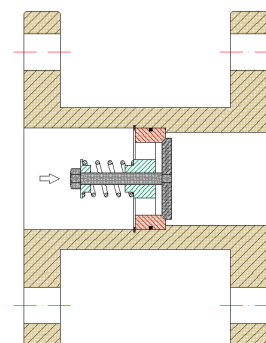


- A TENUTA MECCANICA

Mechanical seal

A' tenue mécanique

CE ISPEL 0100 **PED**
modulo H - H1 Pressure Equipment Directive
 Garanzia di Qualità Totale



CARATTERISTICHE:

- Corpo in acciaio
- Attacchi flangiati PN 40
- Pressione di collaudo 40 bar
- Temperatura di servizio - 40 + 50 °C

Characteristics:

- Steel body
- Flanged connections PN 40
- Testing Pressure 40 bar
- Working temperature - 40 + 50 °C

Caractéristiques:

- Corps en acier
- Attaches à bride PN 40
- Pression d'essai 40 bar
- Temperature de service -40 + 50 °C

				ECCESSO DI FLUSSO EXCESS FLOW VALVE SOUPAPE D'EXCES DE FLUX	NON RITORNO CHECK VALVE SOUPAPE DE NON RETOURN
DN	A	B	C	Cod.	Cod.
15	65	95	95	1.76.05	1.76.50
20	75	105	110	1.76.08	1.76.53
25	85	115	108	1.76.11	1.76.56
32	100	140	110	1.76.14	1.76.59
40	110	150	110	1.76.17	1.76.62
50	125	165	120	1.76.20	1.76.65
65	145	185	140	1.76.23	1.76.68
80	160	200	140	1.76.26	1.76.71
100	190	235	205	1.76.29	1.76.74
150	220	300	230	1.76.32	1.76.77